



sample & hold

The Fredrick Parker Collection





Our technology

At sample & hold we use a Mephisto EX; a flexible, high accuracy 3D scanner based upon structured light technology. It utilises a machine vision camera running at HDTV (1920 x1080) combined with a high contrast ratio data projector to capture 3D geometry and a canon DSLR camera to obtain high resolution colour images.

The task for this project was to 3D scan five examples from the Fredrick Parker collection; maintained by London Met University. The data would be used by MA student Cathy O'Donnell as part of her thesis exploring how digital data can aid conservation.

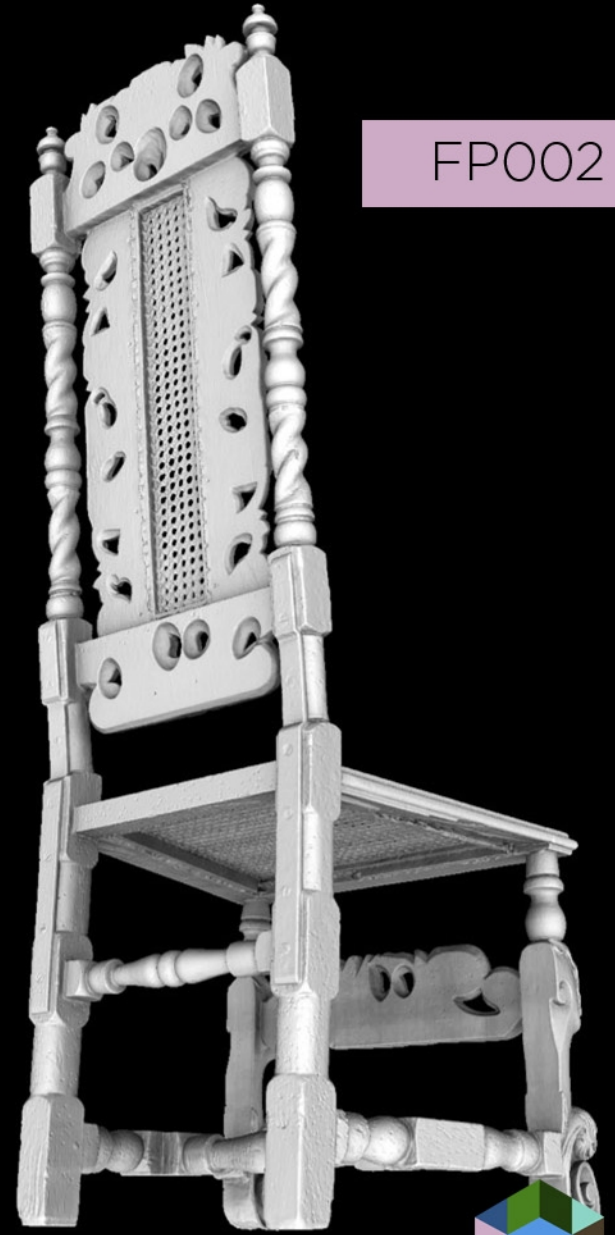
The brief asked for as high resolution data sets as possible and we delivered fully water tight meshes in the region of 35 million triangles per chair, which works out as a point to point resolution of 0.3mm. This meant it was possible to see small features such as woodworm damage and textile deterioration.

We are looking forward to reading Cathy's disertation and will update this Case Study as soon as we recieve her conclusion.



3D scanning on location



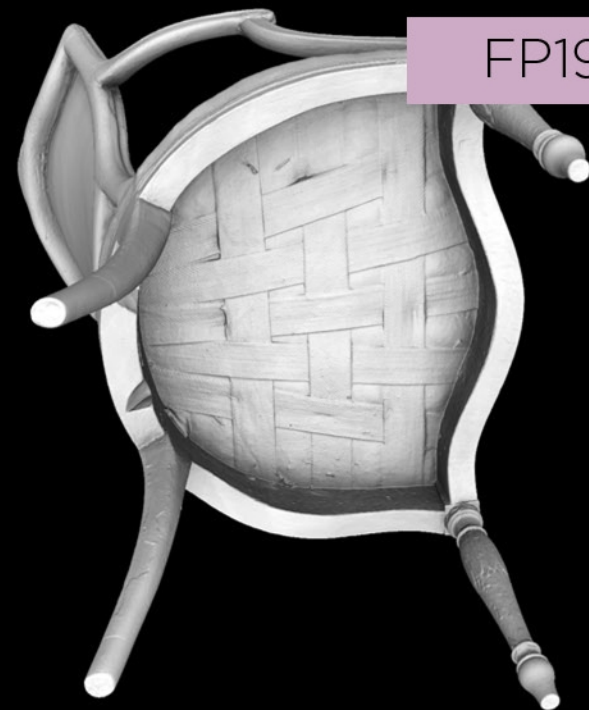


FP002



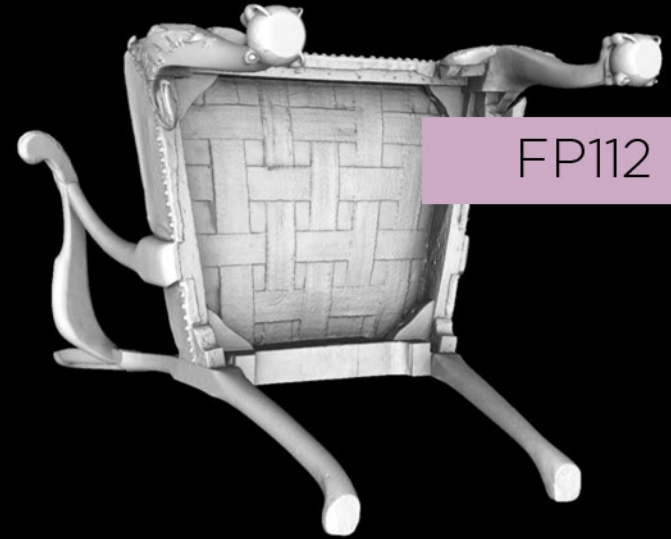
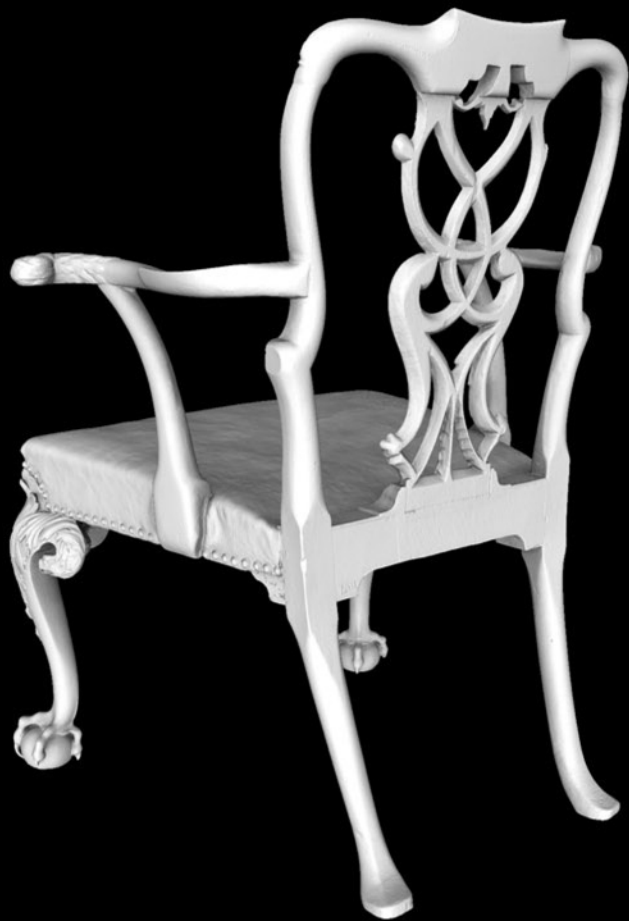
FP146





FP198





FP112





FP004



FP021



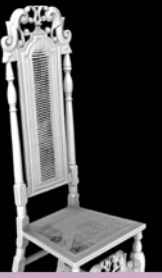
FP029



FP118



FP001



All 24 chairs



FP040



FP069



FP071



FP130



FP051



FP068



FP079



FP105



FP118



FP134



FP097



FP100



FP032



FP057



FP094



FP095



FPJake



FPRedPOW

FP071

FP130

FP051

sample & hold

www.sampleandhold.co.uk / info@sampleandhold.co.uk

FP118

FP134

FP097

all images copyright sample & hold 2014

